



Port
Bronka

Fenix LLC

Address: 49, Krasnoflotskoe highway,
Saint-Petersburg, 198412, Russia
e-mail: info@port-bronka.com
www.port-bronka.ru
[@port_bronka](https://www.instagram.com/port_bronka)
tel.: +7 (812) 777-20-00

**Port Bronka - deepwater port in
Saint-Petersburg, Russia**

Handbook

Contents

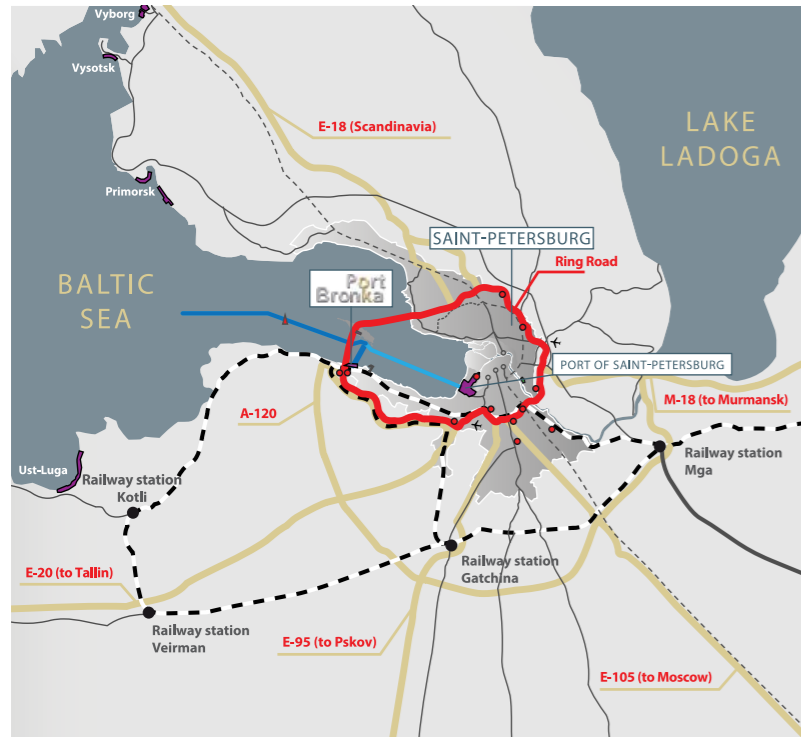
General information	3
Terminal layout	4-5
Port's development plan	6-7
State authorities contacts	8-11
Container cargo at port Bronka	12-13
Ro-Ro cargo at Port Bronka	14-15
Cars and trucks at Port Bronka	16-19
Heavy lifts at Port Bronka	20-21
Break bulk cargo at Port Bronka	22-23
Railway facilities at Port Bronka	24-25
Fast truck operations	26-27
Dangerous goods at Port Bronka	28-29
Warehouse 8 600 m ²	30-31
Covered shed 3 600 m ²	32-33
Full bonded area/warehouse 8272 m ²	34-35
Port Bronka equipment	36-37
Shipping lines	38-39
Sea container specifications / INCOTERMS	40-41
Fenix LLC contacts / Port Bronka 24/7	42-43

General information

Operator – Fenix LLC

- Depth at approach channel and berths - 14,4 m
- Total area – 120 Ha
- Open storage area – 101,6 Ha
- Berth N° 1 length 260 m, depth 14,4 m
- Berth N° 2 (for ro-ro vessels with stern ramp) length 210 m, depth 12,5 m
- Berth N° 3 length 240 m, depth 14,4 m
- Berth N° 4 length 240 m, depth 14,4 m
- Berth N° 5 length 240 m, depth 14,4 m
- Berth N° 6 length 240 m, depth 14,4 m
- «A»-class warehouse – 8 600 m²
- Covered shed – 3 600 m²
- Container terminal capacity in 2018: 500 000 TEU per year, 14 272 TEU yard capacity, total area 75 Ha
- Container terminal capacity at final stage: 1,9 mln. TEU per year, 48 800 TEU yard capacity, total area 90,6 Ha
- Ro-Ro terminal capacity in 2018: 130 000 units per year, total area - 26,6 Ha
- Ro-Ro terminal capacity at final stage : 200 000 units per year, total area 41,3 Ha
- Reefer plugs: 4 000 units
- Pre-gate area for empty/loaded trucks check in – 220 trucks
- Total railtracks length in 2019: 1 622 m
- Total railtracks length at final stage: 7 370 m

Terminal layout



- RR - Saint-Petersburg ring-road
- P-3 - Parking for cars
- P-1 P-2 - Parking for trucks
- G - Gate
- 1 - Service center for drivers
- T - Full bonded area
- A B - Warehouse N°227, shed N°137
- 2 - Customs check area
- 3 - Container terminal
- 4 - Ro-Ro terminal
- 5 - Reefer container yard
- 6 - New cars area
- 7 - Rail tracks
- 8 - Health control authorities
- 9 - Customs and immigration offices
- 10 - Service center
- 11 - Canteen



Port's development plan

TERMINAL DEVELOPMENT (2022)		
Infrastructure	Actual	2022
Quantity of berths	6	9
Quay line (m)	1430	2110
Container terminal capacity (TEU per year)	500 000	1 900 000
Ro-Ro terminal capacity (units per year)	130 000	200 000
Total port's capacity (mln ton per year)	8,0	20,0
Yard container terminal capacity (TEU)	14 272	48 800
Total container terminal area (ha)	75	90,6
Total Ro-Ro terminal area (ha)	26,6	41,3

SOUTH RAILWAY PARK, 31HA (2025)		
Infrastructure	I stage	II stage
Railway tracks quantity	2	7
Length of operation area (m)	2100	7350
Total length of railway tracks (m)	6000	14000
RMG cranes quantity	2	6
Container yard area (ha)	1,1	1,8

MULTIMODAL TRANSPORT AND LOGISTICS HUB (2025 ГОД)	
Infrastructure	
Total MT&LH area (Ha)	35,0
Warehouse's area (m2)	20 000
Designed length of railway tracks (m)	1500
Viaduct to quay line	1



State authorities contacts



Customs office «Bronka» Baltic customs

49, Krasnoflotskoe highway,
Saint-Petersburg, 198412, Russia
tel.: +7 (812) 640-53-77
fax: +7 (812) 640-53-40

Health Authorities:

Veterinary control at port Bronka:

49, Krasnoflotskoe highway,
Saint-Petersburg, 198412, Russia
tel.: +7 (812) 495-54-42

Phytosanitary control at port Bronka:

49, Krasnoflotskoe highway,
Saint-Petersburg, 198412, Russia
tel.: +7 (812) 742-00-12,
tel.: +7 (921) 418-53-87



Saint-Petersburg Health Authorities:

12, Shvetsova str., Saint-Petersburg,
198095, Russia
site: www.ursn.spb.ru
tel.: +7 (812) 252-23-25,
e-mail: clerk@ursn.spb.ru
Mo. – Fr.: 10-00 - 16-00,

Veterinary control department:

Tel./fax.: +7 (812) 677-44-90,
e-mail: fito41@ursn.spb.ru

Phytosanitary control department:

19, Rosensteina str., Saint-Petersburg,
198095, Russia
tel.: +7 (812) 677-44-85

Saint-Petersburg veterinary laboratory

15, Moskovskoe highway,
Saint-Petersburg,
196158, Russia
site: www.vetlab.spb.ru
tel.: +7 (812) 373-51-43, tel.:
+7 (812) 373-65-49, tel.:
+7 (812) 411-44-04
fax: +7 (812) -382-57-69,
e-mail: general@vetlab.spb.ru
Mo. – Fr.: 09.00 - 20.00,
Sa. – Su.: 09.00 - 18.00

Veterinary certification department:

tel.: +7 (812) 373-51-43,
e-mail: general@vetlab.spb.ru

Phytosanitary certification department:

Tel./fax.: +7 (812) 382-50-44,
e-mail: karantin_lab@inbox.ru





State authorities contacts

Russian Baltic Sea ports Administration

10, Gapsalskaya str., Saint-Petersburg,
198035, Russia
tel.: +7 (812) 245-17-00
fax: +7 (812) 327-40-20
telex: 622430 PASP RU
site: www.pasp.ru
e-mail: public@pasp.ru

Head of Administration

Captain Petr Parinov
tel.: +7 (812) 327-40-50

Maritime security service

tel.: +7 (812) 680-29-04
e-mail: DG@pasp.ru

Harbour Master of

Big Port of Saint – Petersburg

Captain Alexander Volkov
tel.: +7 (812) 245-16-75, 714-92-64
fax: +7 (812) 327-40-21

Harbour Master Mate of

Big Port of Saint – Petersburg

Captain Mihail Haryusov

Harbour Master port Bronka office

tel.: +7 (812) 456-38-40
fax: +7 (812) 456-38-42

Border control authorities

62, Shpalernaya str., Saint-Petersburg,
191015, Russia
tel.: +7 (812) 578-03-45
fax: +7 (812) 271-45-88
site: www.ps.fsb.ru
e-mail: pu.spb.lenobl@fsb.ru

Border control department «Saint-Petersburg»

34, Kalinina str., Saint-Petersburg,
198099, Russia
tel.: +7 (812) 786-76-07



Container cargo at Port Bronka



Ro-Ro cargo at Port Bronka



Cars and trucks at Port Bronka



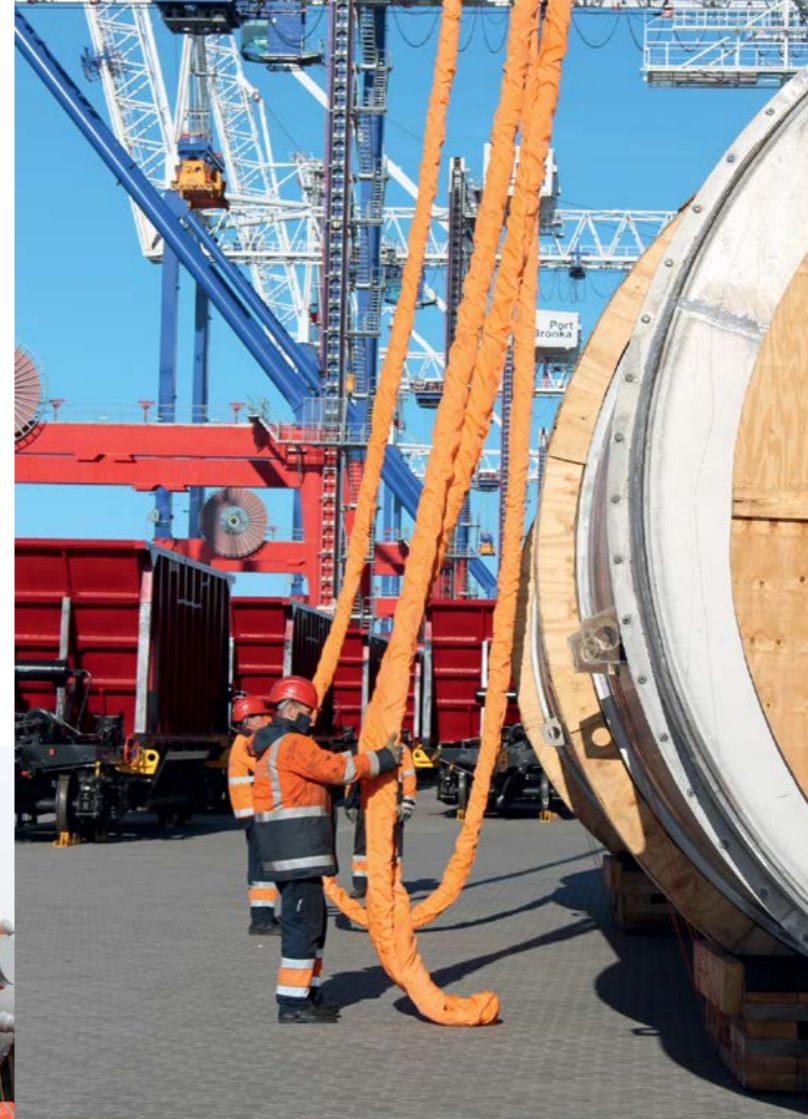
Heavy lift and project cargo at Port Bronka

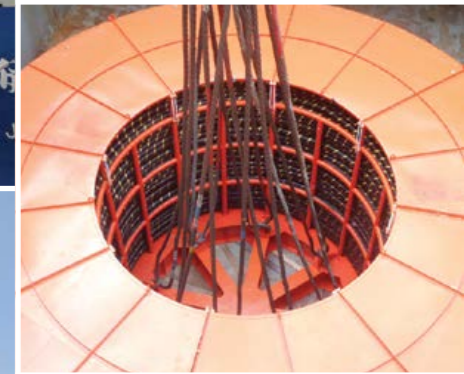


HANDLING MACHINERY AND EQUIPMENT:

- 2 x Liebherr LHM800 -302 tons
 - 10 x roll-trailers – 100 tons
 - 3 x Reach stackers – 45 tons
 - 22 x Fork-lifts – up to 33 tons
 - 1 x Lifting beam - 200 tons, 20m
 - 2 x Lifting beams - 150 tons, 7,5m
 - and other machinery and equipment
-
- Truck's gate dimensions limit: 8,2m width, 6,5m height
 - Road limit: up to 250 tons (up to 500t in 2020)
 - Rail limit: up to 500 tons
 - River barge limit: no limits

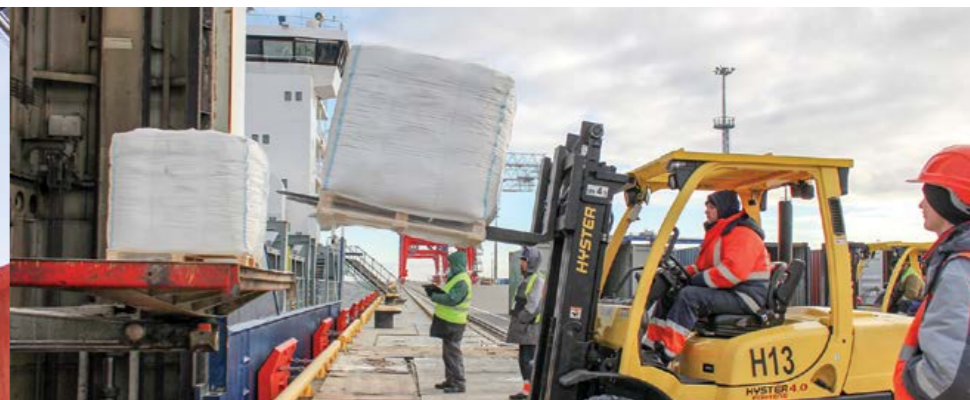
ADDITIONAL SERVICE: STORAGE BETWEEN RIVER NAVIGATION SEASONS INCLUDING TEMPERATURE CONTROL STORAGE.







Break bulk cargo at Port Bronka



Rail facilities at Port Bronka

PORT BRONKA RAILWAY DETAILS:

Consignee: Fenix LLC

Address:
49, Krasnoflotskoe highway,
Saint-Petersburg, 198412, Russia

Post address:

49, Krasnoflotskoe highway,
Saint-Petersburg, 198412, Russia
tel.: +7 (812) 777-2000

TIN: 7838319768,

RRC: 784201001,

OKPO: 76203941

Rail station «Bronka-export»:
code – 075702,

Rail station «Bronka»: code – 075308

Oktyabrskaya Railway:

Consignee code - 3941



Check your opportunity with **FAST TRUCK OPERATIONS:** less than one hour from gate in till gate out












- 1 min for check in pre-gate area
- 3 min for parking
- 15 min for documentation formality
- 2 min for moving to operational area
- 30 min for cargo operation
- 2 min for moving to gate out



Dangerous goods at Port Bronka



IMO Classes	Classification of dangerous goods	Handling of dangerous goods	Storage of dangerous goods
1	 Explosives	Yes	Storage is not permitted
2	 Gases	Yes	Storage is allowed but with exclusions *
3	 Flammable liquids	Yes	Storage is permitted
4	 Flammable solids or substances; self-flammable solids; substances which in contact with water emit flammable gases	Yes	Storage is allowed but with exclusions *
5	 Oxidizing substances; organic peroxides	Yes	Storage is permitted
6	 Toxic, poison and infection substances	Yes	Storage is allowed but with exclusions *
7	 Radioactives	Yes	Storage is not permitted
8	 Corrosives	Yes	Storage is permitted
9	 Miscellaneous	Yes	Storage is permitted

* Storage of IMO cargo subject to the Operator's confirmation

Warehouse

8 600 m²



Covered shed 3 600 m²



Full bonded area/warehouse 8271 м²

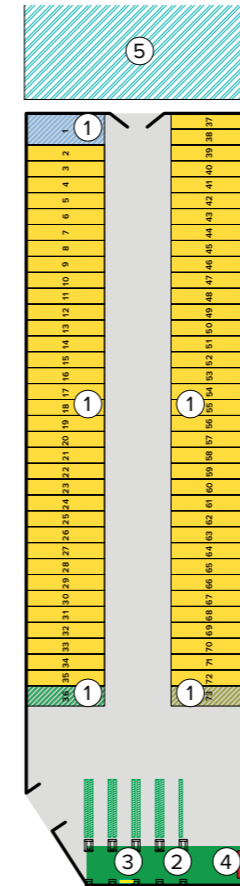


Customs warehouse accepts goods delivered by sea, road and railway transport both directly to port Bronka and from any place of entry to the Eurasian economic Union.

Full bonded area/warehouse with total area of 8271 m2 is located on the territory of port Bronka under Baltic Customs house control.

Cargo owners have an opportunity to place goods at full bonded area/warehouse for the purposes of :

- goods storage up to 3 years without paying of customs and tax duties;
- goods reselling and consignee change;
- marking, packing, goods sorting and etc .;
- customs clearance of consignment or its pieces;
- placing of goods at full bonded area/warehouse by non-residents of the Russian Federation is permitted;
- re-export or transit of goods without payment of import duty.



FULL BONDED AREA/WAREHOUSE LAYOUT

1. Storage area
2. Shed for marking, repacking and sorting
3. Weighing area
4. Office module
5. Loading/discharging area



Port Bronka equipment



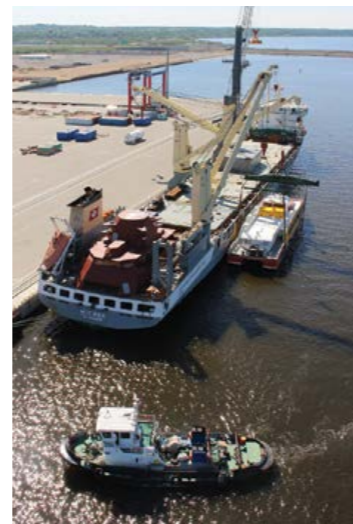
Equipment	Model	Capacity	Quantity
STS	Liebherr Post Panamax (Twin Lift spreader)	65 tons	4 units
Mobile crane	LHM-800 Liebherr Super Post Panamax	302 tons	2 unit
RTG	Konecranes	50 tons	10 units
Tug-masters (Ro-Ro terminal)	Terberg	45 tons, tow 450 tons	1 units
Tug-masters (Ro-Ro terminal)	Terberg	35 tons, tow 150 tons	5 units
Tug-masters (container terminal)	Terberg с прицепом Novatech	65 tons	25 units
Railstacker	Konecranes	45 tons	3 units
Stacker	Konecranes	9 tons	2 units
Sprinter carrier	Terex	50 tons	2 units
Heavilifts roll-trailer	Novatech	100 tons	10 units
Trailer for dangerous cargo	Novatech TT60t-45' Liquid	60 tons	3 units
Forklifts	Konecranes, Hyster, Kalmar	1,8 tons; 3,5 tons; 4 tons; 5 tons; 8 tons; 10 tons; 16 tons, 33 tons	22 units

Shipping lines at Port Bronka



Tug support at port Bronka - LLC «Ecological fleet»

tel.: +7 (812) 495-85-46
 fax.: +7 (812) 251-66-18
 site: www.portfleet.ru
 e-mail: eisa@portfleet.ru



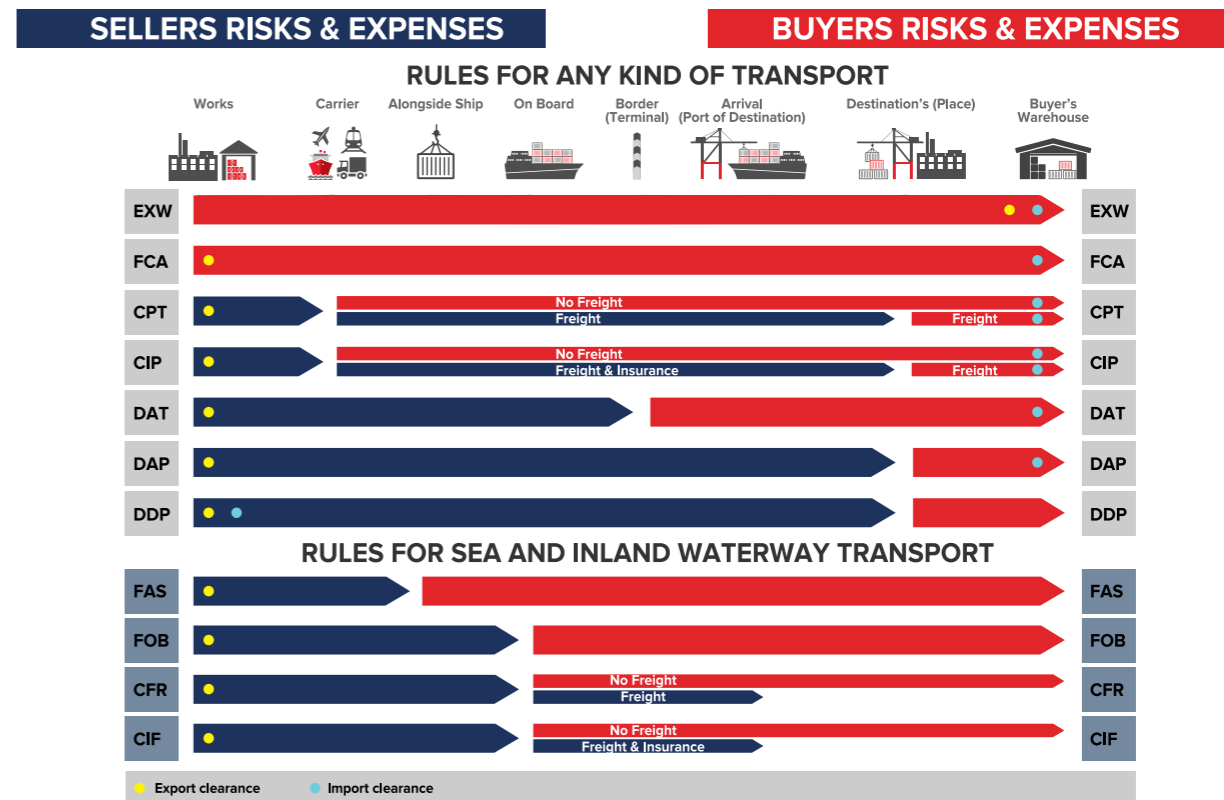
SHIPPING LINE	AGENCY IN SAINT-PETERSBURG	CARGO	DIRECTIONS	PHONE NUMBER
ACL	Trans-Log LLC	Containers, Ro-Ro, general, heavy lifts	USA	+7 (812) 303-99-14
APL	APL CIS	Containers	Europe, China, Korea, Japan, India, Pakistan, South-East Asia, North America	+7 (812) 740-63-80
ARRC (Atlantic Ro-Ro Carriers)	Baltir Mercur JSC	Контейнеры, генеральные, тяжеловесные, негабаритные	USA, Europe	+7 (812) 332-27-67
CMA CGM	CMA CGM Rus LLC	Containers	Europe, China, Korea, Japan, South-East Asia, India, Pakistan, Arabian Gulf, North America, South America, Africa, Mediterranean, Australia, New Zealand	+7 (812) 740-35-96
Containerships	Containerships Saint-Petersburg JSC	Containers	Europe	+7 (812) 324-46-36
COSCO	COSCO SHIPPING LINE (RUSSIA) LLC	Containers, general, heavy lifts	Europe, China, Korea, Japan, South-East Asia, South America, Africa, Mediterranean	+7 (812) 363-06-30
FESCO	FESCO Integrated Transport, Ltd. LLC	Containers	Europe, China, South-East Asia	+7 (812) 363-09-30
FINNLINES	Trans-Log LLC	Containers, Ro-Ro, general, heavy lifts	Finland, Germany, Belgium, Spain	+7 (812) 303-99-14
Grimaldi Lines	Trans-Log LLC	Containers, Ro-Ro, general, heavy lifts	USA, South America, West Africa, Mediterranean	+7 (812) 303-99-14
KESS	K-line Rus LLC	Ro-Ro	Europe	+7 (812) 331-96-80
Northern Shipping Company	Northern Shipping Company Petersburg LLC	Containers, general, heavy lifts	Kaliningrad, Europe	+7 (812) 331-40-44
ONE	ONE Rus LLC	Containers	Japan, China, South-East Asia, India	+7 (812) 335-33-77
OOCL	OOCL Russia LLC	Containers	Europe, Mediterranean, China, South-East Asia, India, Arab Gulf, USA, Canada	+7 (812) 335-66-25
SEL (Shortsea Express Lines)	SEL Russia LLC	Containers, general, heavy lifts	Europe	+7 (812) 332-00-75
Yang Ming Line	Yang Ming (Russia) LLC	Containers	Europe, Mediterranean, China, South-East Asia, India, Arab Gulf, USA, Canada	+7 (812) 449-33-90

Sea container specifications

Container type		Picture	Internal dimension*, m		Door opening, m		Container tare*, kg	Capacity, m ³	Max gross weight, kg**
20' Dry Van	20 DV, 20 DC, 20GP		L W H	5,90 2,35 2,40	W H	2,35 2,40	2200	33,3	21800 / 28200
40' Dry Van	40 DV, 40 DC, 40GP		L W H	12,00 2,35 2,40	W H	2,35 2,40	3900	67,7	26700 / 28700
40' High Cube	40 HC, 40HQ		L W H	12,00 2,35 2,70	W H	2,35 2,70	4000	76,1	26600 / 28600
20' Open Top	20OT		L W H	5,90 2,35 2,35	W H	2,35 2,35	2100	32,6	21800 / 28200
40' Open Top	40OT		L W H	12,00 2,35 2,35	W H	2,35 2,35	3800	66,3	26600
20' Flat Rack	20 FR, 20 FL, 20 PL, 20 FLAT		L W H	6,00 2,40 2,23			2900		31100
40' Flat Rack	40 FR, 40 FL, 40 PL, 40 FLAT		L W H	12,00 2,37 1,95			5000		40000 / 45000
20' Reefer	20 RF, 20 REF		L W H	5,45 2,28 2,12	W H	2,28 2,12	2850	26,3	21150
40' Reefer	40 RF, 40 REF		L W H	11,55 2,28 2,09	W H	2,28 2,09	4580	55,0	25900
40' Reefer High Cube	20 RH, 40 RHC		L W H	11,58 2,28 2,40	W H	2,28 2,40	4650	63,4	27850 / 29100
20' Tank	20 TK						3600-4200	24	21000

* The container's dimensions may differ from the mentioned above.

INCOTERMS



Fenix LLC contacts

Post address:

49, Krasnoflotskoe highway, Lomonosov,
Saint-Petersburg, Russia, 198412,

Administration:

tel.: +7 (812) 777-20-00
fax.: +7 (812) 661-13-56
e-mail: info@port-bronka.com

Sales and marketing department:

tel.: +7 (812) 661-13-44
e-mail: sales@port-bronka.com

Agreement and Invoicing Department:

tel.: +7 (812) 661-13-47
e-mail: contact-ct@port-bronka.com
e-mail: contact-rt@port-bronka.com

Addresses for notices of ship-owners and agents:

e-mail: service-ct@port-bronka.com
e-mail: service-rt@port-bronka.com
e-mail: notice@port-bronka.com

Port Bronka 24/7 services

Ro-Ro terminal service center:

tel.: +7 (812) 661-13-41
e-mail: service-rt@port-bronka.com

Container terminal service center:

tel.: +7 (812) 661-13-40
e-mail: service-ct@port-bronka.com

Service center for drivers:

tel.: +7 (812) 661-13-42, e-mail:
service-avto@port-bronka.com

IT support:

tel.: +7 (812) 661-13-55
e-mail: support@port-bronka.com

Visitors passes and entrance control:

tel.: +7 (812) 777-20-00 add. 2702
+7 (812) 245-15-87
fax: +7 (812) 661-13-36,
e-mail: info_propusk@port-bronka.com





Contacts:

www.port-bronka.com

E-mail: info@port-bronka.com

[@port_bronka](https://www.instagram.com/port_bronka)

tel.: +7 (812) 777-2000

tel.: +7 (812) 245-1607

49, Krasnoflotskoe highway, Saint-Petersburg, 198412, Russia

GPS: 59°5549.0"N 29°4058.9"E

